

Season 2017 Presentation



Contents

I. Company Situation

- ☐ Market presence
- ☐ Racing Program

II. 2017 Evolutions

- ☐ Enduro
- ☐ Trial

I. Company situation

❑ Market presence

2016 OPENING:

ARGENTINA
PANAMA
HONDURAS
CYPRUS
SOUTH KOREA

❑ Countries : 65

Importers : 76

Dealers: over 850

I. Company situation

❑ Racing Program

❑ Enduro :

- ❑ WEC: Matthew Phillips 300 4T / Lorenzo Santolino 300 2T / Kirian Mirabet 250 4T
- ❑ Extreme & Indoor : Wade Young 250 2T / 300 4T
- ❑ Popular Race : Jeremy Tarroux 300 4T
- ❑ European : Tom Sagar 450 4T
- ❑ Promotion Race : Fabien Planet



I. Company situation

☐ Racing Program

☐ Rally Raid

- ☐ Joan Pedrero
- ☐ Adrien Metge
- ☐ Aravind KP



I. Company situation

☐ Racing Program

☐ Trial

- ☐ Albert Cabestany
- ☐ Miquel Gelabert
- ☐ Alexandre Ferrer
- ☐ Emma Bristow



I. Company situation

❑ Racing Program

❑ Pre-moto 3

❑ Mathieu Gregorio



II. 2017 Enduro Evolutions

S



II. 2017 Enduro Evolutions

2017 Common changes :

- ❑ New appearance
 - New design
 - Plastic parts reinforced
 - In mold graphics
 - Dual compound plastics
 - Improved rider protection



II. 2017 Enduro Evolutions

2017 Common changes :

- ❑ Frame protector



- ❑ Plastic clips front brake/speedo cables

II. 2017 Enduro Evolutions



2017 Common changes :

☐ New fuel tank higher capacity

- $4T = 9,7L (+1,2L)$
- $2T = 10,4L (+0,9L)$



II. 2017 Enduro Evolutions



2017 Common changes :

❑ Modified chassis geometry

- *Angle reduced*
- *Steering head tube*
- *Linkage*



- *Better traction*
- *Improved front wheel grip*
- *Better steering control*

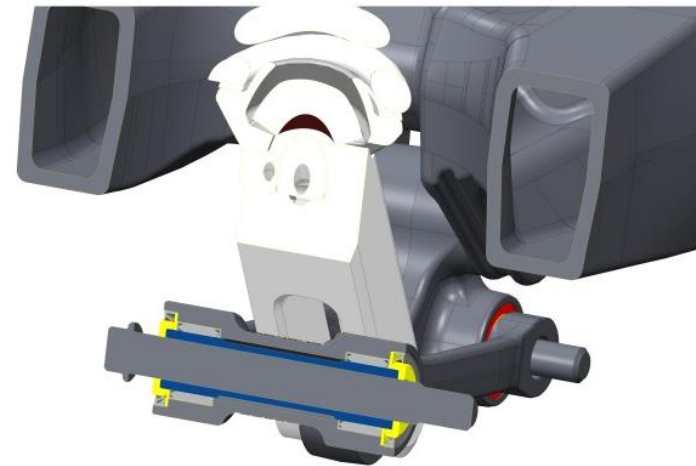
❑ Frame reinforced in many points

II. 2017 Enduro Evolutions



2017 Common changes :

- ❑ **Modified linkage:**
 - **Larger diameter 14 mm axles & improved sealing system**



- ***Improved resistance and life time***
- ❑ **New material on swing arm pad : 40% stronger**
- ❑ **New reinforced rear wheel axle**

II. 2017 Enduro Evolutions



2017 Common changes :

☐ New preload ring added to the shock absorber:

- *Easy access for adjustment*
- *Anti seizing locking ring*
- *Higher durability*



☐ New front wheel spokes:

- *Better rigidity of the wheel*
- *Weight reduction*



☐ New stronger rim tape:

- *Giving the tube better protection*

II. 2017 Enduro Evolutions



2017 Common changes :

☐ Factory Grips



- *Dual colour compound*
- *Sherco logo molded*

II. 2017 Enduro Evolutions

250 / 300 SE-R 2T 2017:



II. 2017 Enduro Evolutions

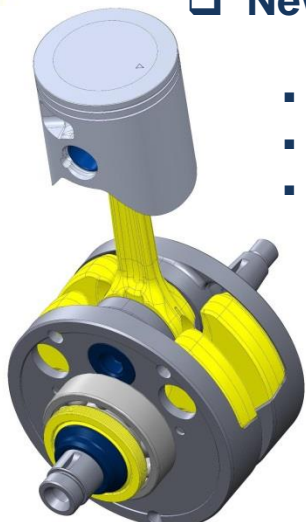
250 / 300 SE-R 2T 2017 common evolutions

- ❑ Cylinder head to frame mounting support reinforced



- *Resistance to deformation improved*

- ❑ New balance crankshaft



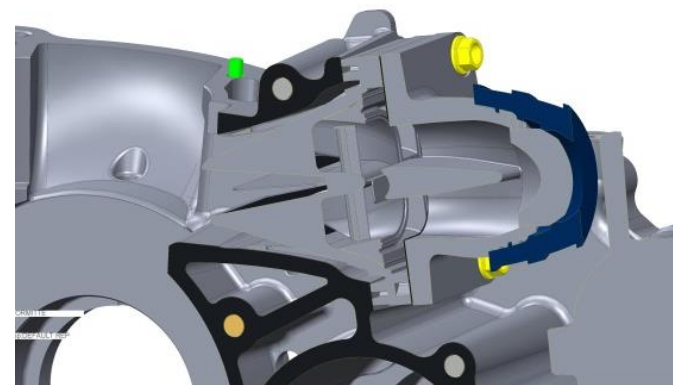
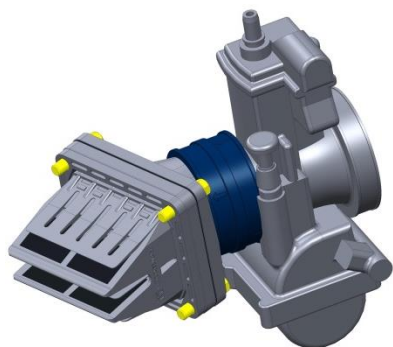
- *Better engine smoothness and power at low revs*
- *Vibrations reduced*
- *Engine inertia less important (lighter feeling)*



II. 2017 Enduro Evolutions

250 / 300 SE-R 2T 2017 common evolutions

❑ New V Force 4 reed assembly with built in stops



- *Increase low speed power / Provides longer reed life*
- *Same reeds 250 / 300 engines*

❑ Evolution of the carburation settings

- *Riding feeling is more linear power delivery*
- *Less detonation*
- *Reduction in pinking effect when slowing down*

II. 2017 Enduro Evolutions

250 SE-R 2T 2017

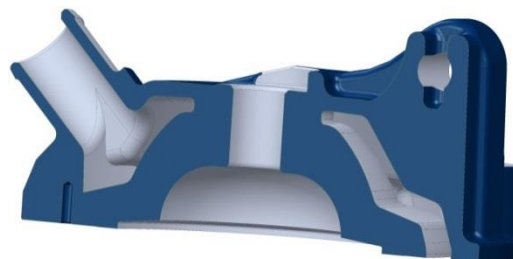
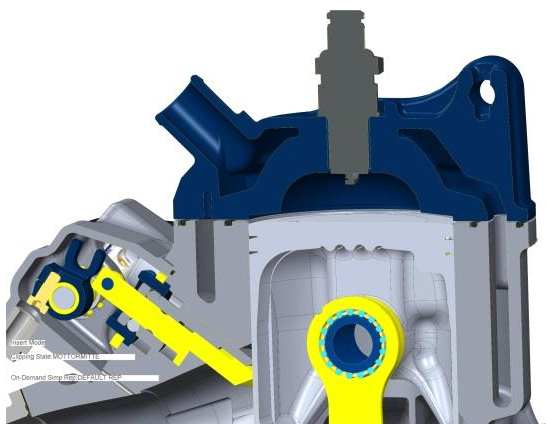
❑ New piston

- *Improved efficiency*
- *Longer service life*



❑ New combustion chamber

- *More linear power delivery*



II. 2017 Enduro Evolutions

250 / 300 SEF-R 4T 2017:



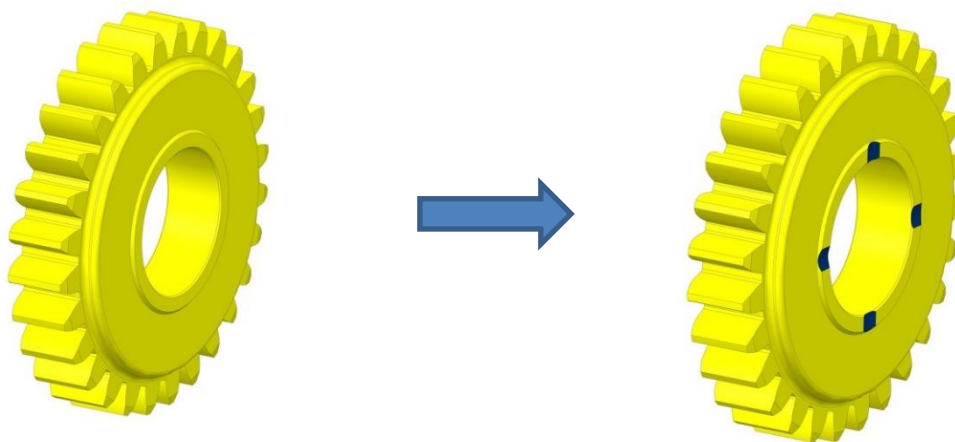
II. 2017 Enduro Evolutions



250 / 300 SEF-R 4T 2017 common evolutions

❑ New transmission gears: Forged and fully machined

- *Improved bearings lubrication*
- *Pitting reduced*
- *20% increased lifetime*
- *Dakar Technology*



II. 2017 Enduro Evolutions



250 / 300 SEF-R 4T 2017 common evolutions

- ❑ Redesigned fuel pump: improved reliability
- ❑ Optimization of the keyless injection wiring system
 - Battery terminals
 - Revised starter relay
 - New sheath entire wiring harness

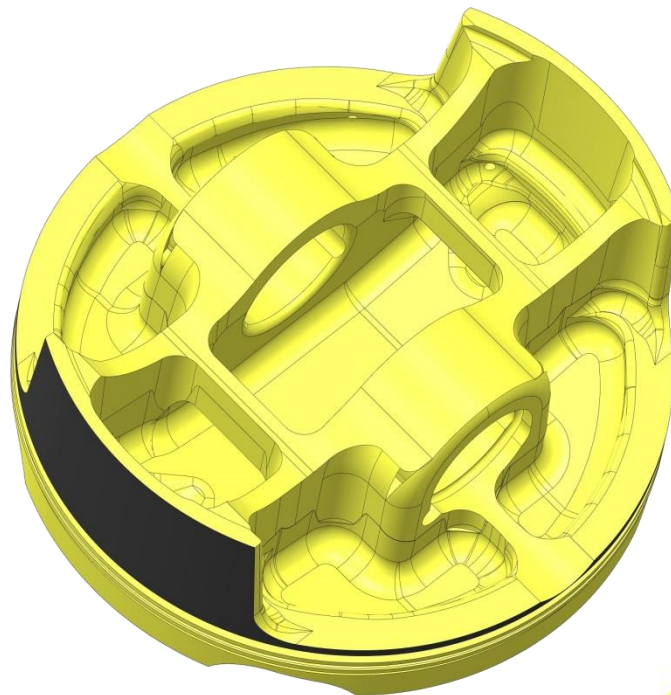


II. 2017 Enduro Evolutions

250 SEF-R 4T 2017

□ New piston

- *Forged technology*
- *Durability improved*
- *+20% resistance without additional weight /inertia*



II. 2017 Enduro Evolutions

450 SEF-R 4T 2017:

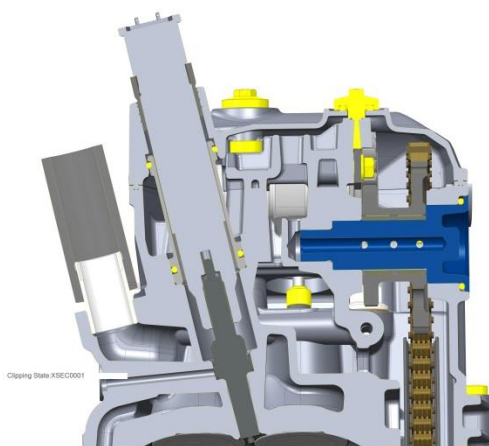


II. 2017 Enduro Evolutions

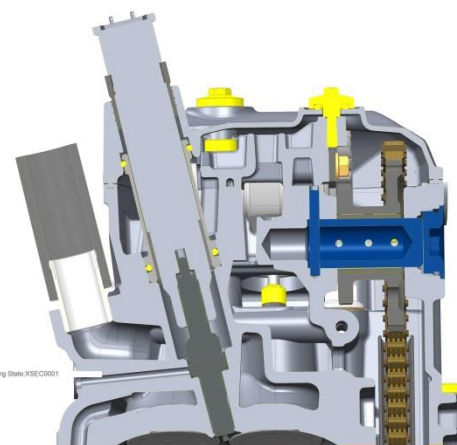
450 SEF-R 4T 2017

□ Design cylinder head modified

- *simplified assembly*
- *improved durability*
- *improved appearance*
- *reduced weight*



2016



2017

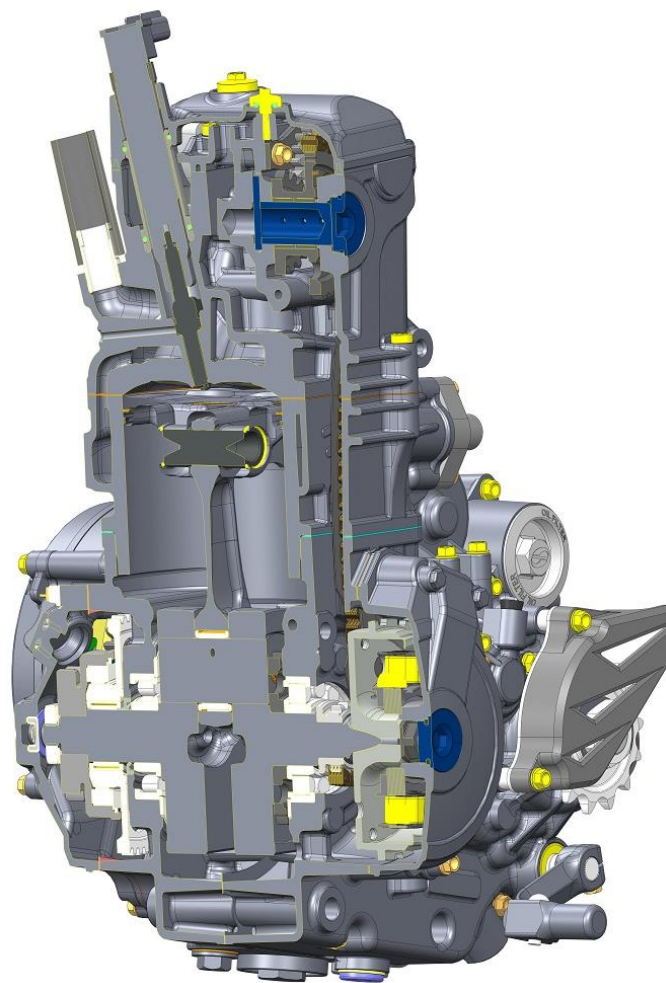
II. 2017 Enduro Evolutions

450 SEF-R 4T 2017

❑ Clutch Lubrication optimized

- *Better feeling*
- *Improved durability*
- *Temperature controlled*

❑ Redesigned fuel pump *Improved reliability*



II. 2017 Trial Evolutions

125 / 250 / 300 ST 2T 2017:

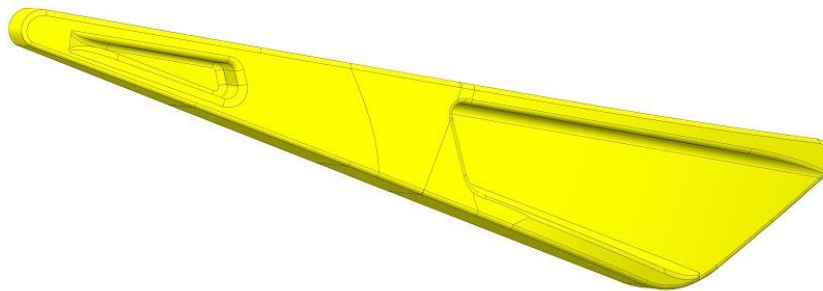


II. 2017 Trial Evolutions



125 / 250 / 300 ST Common evolutions

- ☐ New steering stops
 - Frame protected against crushing
- ☐ New lower chain frame guard
 - Pad life improved



II. 2017 Trial Evolutions



125 / 250 / 300 ST Common evolutions

- ☐ **New front brake master cylinder**
 - Better feeling and information feedback

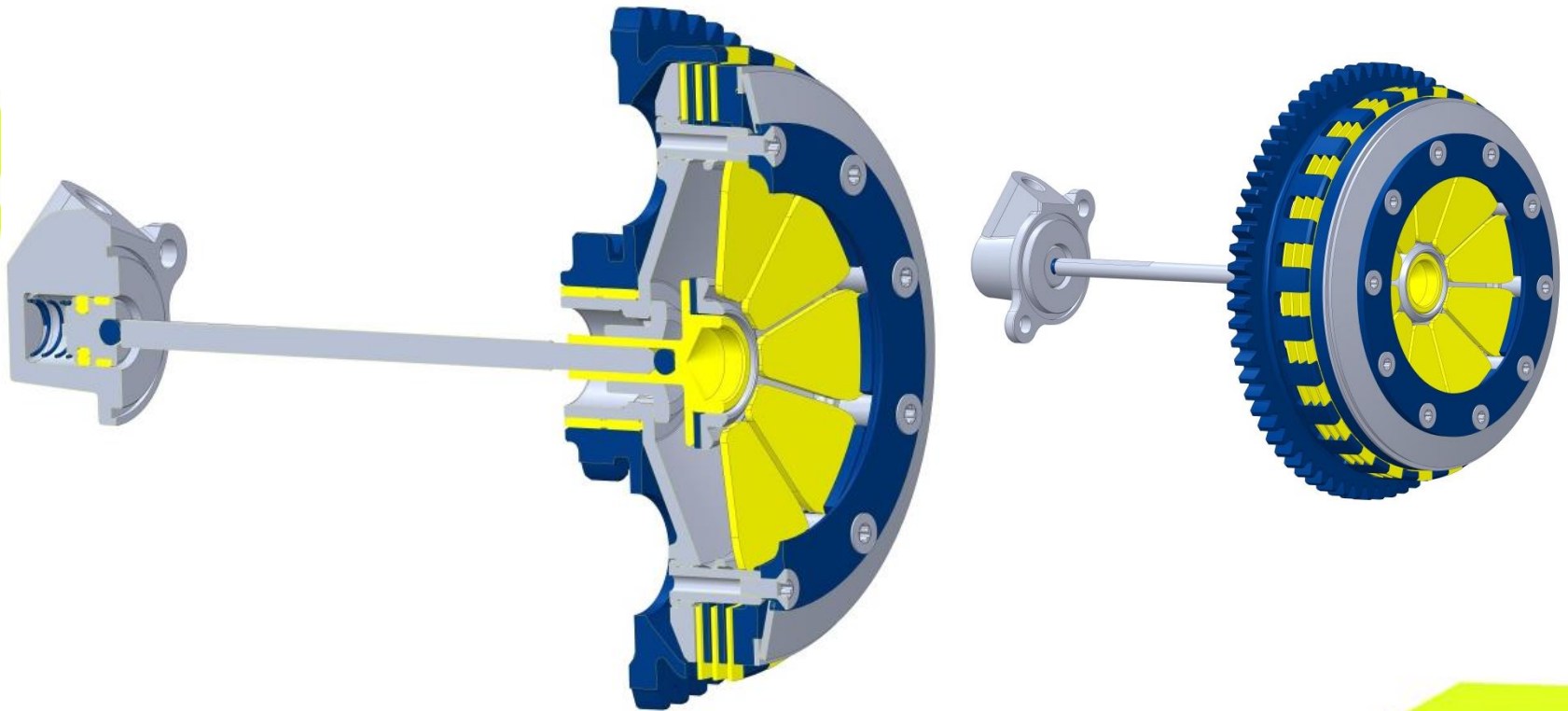
- ☐ **Dual ignition system**
 - Combustion stability improved
 - Less sensibility to carb settings
(reduced influence of altitude and weather conditions)
 - identical ignition to factory version



II. 2017 Trial Evolutions

125 / 250 / 300 ST 2T Common evolutions

- ❑ New Clutch : diaphragm system 100 % Sherco technology



- *Progressive control*
- *Better feeling*
- *Top riders better performance*

II. 2017 Trial Evolutions

125 / 250 / 300 ST 2T Common evolutions

❑ New Clutch : diaphragm system (2)

	2017 (NEW)
SYSTEM	Diaphragm system
Progressivity	Progressive clutch disengagement
Temperature influence	Stable feeling with temperature variations
Precision control	Optimized connection friction point / lever
Clutch disengagement	Disengagement 100% efficient even with high RPM Security improved
Compacity	Reduction: diameter -18mm wideness: -13mm 3 friction discs

❑ New clutch master cylinder: more precise sensibility

THANK YOU !

